



AiPU Solid Control

PRODUCT
CATALOGUE



Aipu Solid Control Co., Ltd

Inquiry : info@aipusolidcontrol.com



ABOUT AIPU

The core team of Aipu Solid Control Co., Ltd has over 20 years of in-depth experience in the industry, and we specialize in mud solids control and treatment for oil and gas drilling and production. We continuously explore and progress through excelling in product development and responding to customer needs, thus forming a full-range supply of horizontal and vertical products. Our offerings include mud solids control systems, drilling mud waste treatment, oily sludge treatment, fracturing liquid drainage treatment, mud cooling system, municipal construction slurry separation, and mining core solids removal unit, etc.

Currently, our products have been delivered to over 30 countries and regions worldwide, with a cumulative delivery of over 300 system-equivalent products. Aipu has won customer trust with reliable quality and industry recognition with unwavering initial aspirations. In terms of hardware, Aipu boasts a production base of over 50,000 square meters and a full range of advanced manufacturing equipment, providing strong support for the production of professional and high-quality products. In terms of software, Aipu has obtained multiple international system certifications and product certifications, as well as a number of independent invention patents.

Looking ahead, Aipu will continue to forge ahead, hand in hand with global partners, and inject more strength into oil and gas drilling and production!

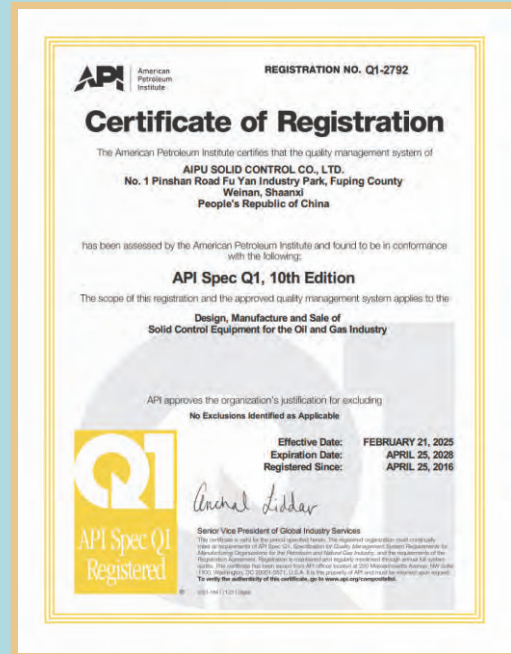


CONTENTS

Shale Shaker	05-07
Centrifugal Degasser	08
Vacuum Degasser	09-10
Mud Cleaner	11-12
Desander	13-14
Desilter	15-16
Mud Decanter Centrifuge	17-18
Full Hydraulic Decanter Centrifuge	19
Three-Phase Decanter Centrifuge	20-21
Mud Agitator	22-23
Vacuum Transfer Pump	24-25
Centrifugal Pump	26-27
Screw Pump	28-29
Submersible Slurry Pump	30
Shear Pump	31-32
Jet Mud Mixer	33-34
Portable Hopper	35-36
Mud Gun	37-38
Mud Gas Separator	39-40
Flare Ignition Device	41-42
Solids Control System	43-44
Tanks	45-46
Vertical Cuttings Dryer	47-48
Auger Feeder	49-50
Mud Cooling System	51
Oily Sludge Treatment System	52
Oil Based Mud Waste Management	53
Water Based Mud Waste Management	54
Drilling Accessory Equipment	55-56
Aipu Partners	57-58

AIPU

CERTIFICATES





AIPU HUNTER-MG SHALE SHAKER

Application and Efficacy

- ◆ Effective first stage solids separation of drilling fluids, widely used in the drilling industry in particular.
- ◆ Efficient solid-liquid separation provides a good separation for subsequent work and reduces subsequent waste.
- ◆ Reduces overall disposal costs, reduces wasted mud losses and reduces total drilling costs.

Features and Benefits

High treating capacity

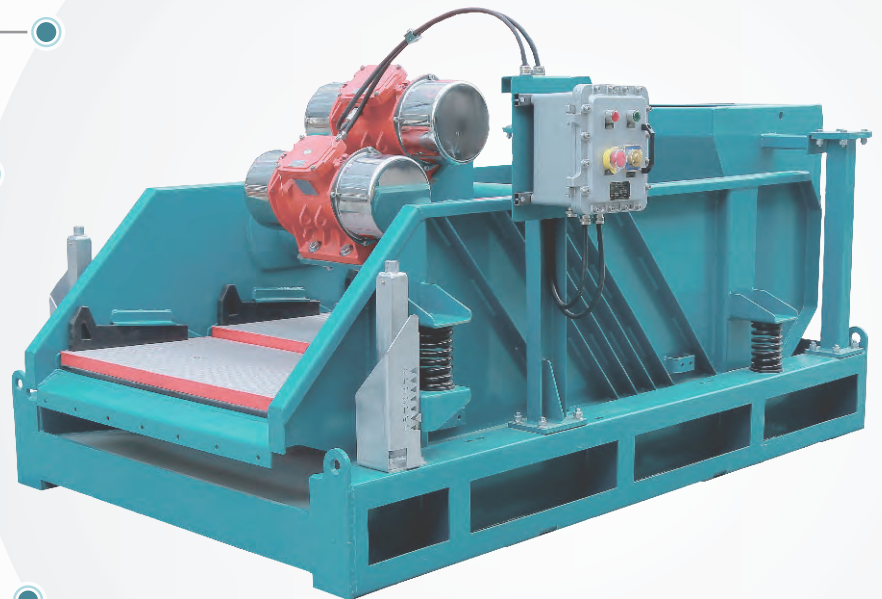
Larger effective screen area

Flexible adjustment angle

Quick-replace screen design

Less maintenance costs due to few wear parts

High quality raw materials and heat treatment





Technical Parameters

Model	Hunter-MG3	Hunter-MG4	Hunter-MG5	Hunter-Mini	Hunter-MG4V	Hunter-MG5V	Hunter-MG4D	Hunter-MG4T
Capacity	120m ³ /h	140m ³ /h	180m ³ /h	50m ³ /h	140m ³ /h	180m ³ /h	280m ³ /h	420m ³ /h
Screen Area	2m ²	2.7m ²	3.4m ²	1.35m ²	2.7m ²	3.4m ²	5.4m ²	8.1m ²
Screen Number	3	4	5	2	4	5	8	12
Motor Power	2X1.5kW	2X1.72kW	2X1.94kW	2X0.75kW	2X1.72kW	2X1.94kW	2X2X1.72kW	3X2X1.72kW
Deck Angle	-1 - +5°	-1 - +5°	-1 - +5°	0°	-1 - +5°	-1 - +5°	-1 - +5°	-1 - +5°

Note: More requirements please contact us freely

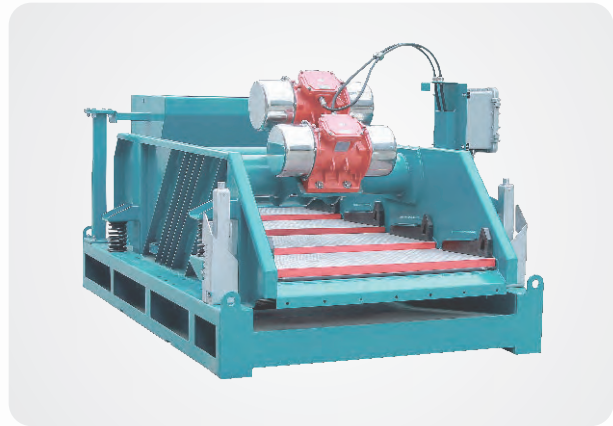
More Options

Facing the international market, based on the actual needs of users, AIPU provides flexible configuration for customers. The following are the main optional parameters.

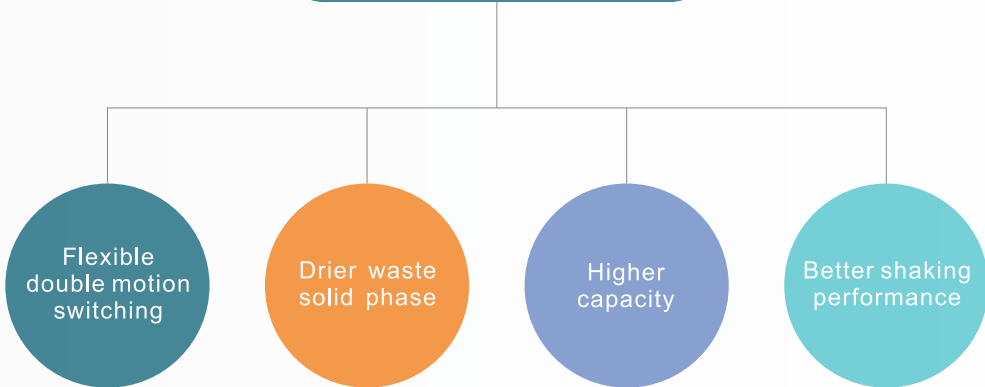
- Motor brand-Ital-Vibras/Martin/Oli
- Screen panel-steel framed or composite framed
- Dry shaker or other function shakers
- Electrical system is customizable
- Customize Dual tandem or Triple tandem available
- Surface color

Hunter-MGD Dual-motion Shale Shaker

The Hunter-MGD shaker's motors have been replaced with special motors that allow the shaker to be easily switched between vibration modes during operation, adapting the vibration pattern to actual drilling conditions for optimal use. Only 2 motors are needed to achieve the dual motion function. This is an internationally advanced design concept that is very popular with many customers, especially in Europe and the Middle East.



Features and Benefits



Technical Parameters

Vibration Motion	Balance Elliptical/Linear Motion
Motor Power	1.86kW x 2
G-Force	6.0-7.0G
Double Amplitude	5~6mm
Capacity	140m³/h

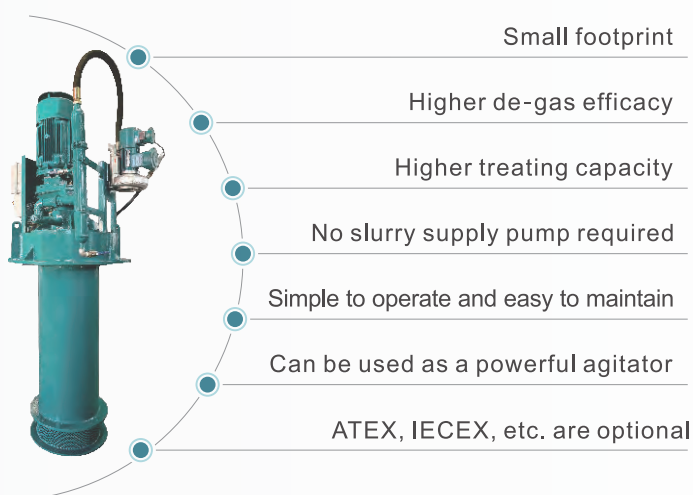
Deck Angle	-3~+3°
Electrical System	380V/50HZ; 460V/60HZ (Customizable)
Screen	585x1165mm x 4
Noise	≤85db
Weight	1520kg

AIPU APLCQ300 VERTICAL DEGASSER

Description

The vertical degasser, also known as an atmospheric degasser/centrifugal degasser, is a highly efficient new type of equipment for the removal of small bubbles from drilling mud. The APLCQ300 vertical degasser is designed and manufactured in strict accordance with API standards and HSE requirement.

Features and Benefits



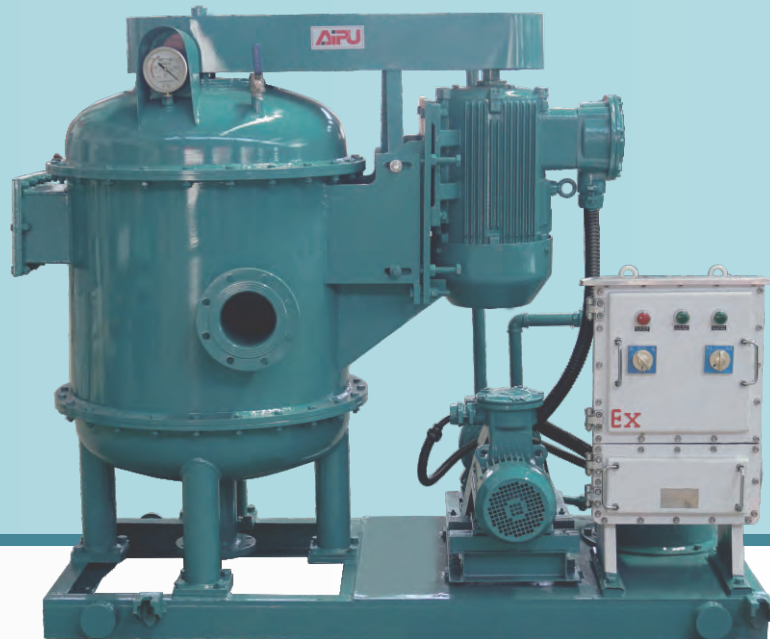
Technical Parameters

Model	APLCQ300
Inlet ID	20"
Outlet ID	6"
Vent ID	1-1/2"
Flow Rate	300m ³ /h

De-Gas Capacity	30m ³ /h
Main Motor	22kW
Vacuum Pump	1.1kW
Dimension	1150x1054x3110mm
Weight	1400kg

AIPU APZCQ

VACUUM DEGASSER



Application and Efficacy

- ◆ The second stage of solids control system, which removes the entrained gas in drilling mud.
- ◆ Mainly removes small bubbles encasulated in liquid film efficient separation of harmful entrained gases, such as hydrogen sulfide, carbon monoxide and methane from the drilling fluid.
- ◆ Breaking up of small bubbles for easier separation.
- ◆ Adequate agitation of the drilling fluid.

Features and Benefits

Self-suction no extra-pump required

High de-gas efficiency

Compact design

Strict sand-blasting procedure

Abrasion and corrosion resistant coatings



Technical Parameters

Model	APZCQ240	APZCQ270	APZCQ300	APZCQ360
Capacity	240m ³ /h	270m ³ /h	300m ³ /h	360m ³ /h
Vacuum Degree	-0.02~-0.04Mpa			
Efficiency	≥95%			
Main Motor	15kW	22kW	30kW	37kW
Pump Motor	2.2kW	3kW	4kW	5.5kW
Speed	860rpm	870rpm	876rpm	880rpm

More Options

Facing the international market, based on the actual needs of users, AIPU provides flexible configuration for customers. The following are the main optional parameters.

- Electrical system is customizable
- Available in plain carbon steel or hydrogen sulfide resistant steel
- ATEX, IECEX, etc. are optional
- Surface coating colors

Other Options

In addition to the APZCQ and APLCQ, the APVD vacuum degasser is also popular with many customers. The APVD is a high performance product with a high capacity and low power consumption, it is a low energy consumption and environmentally friendly product-It has an internal level float control valve. The whole process is simple and well effectiveness.



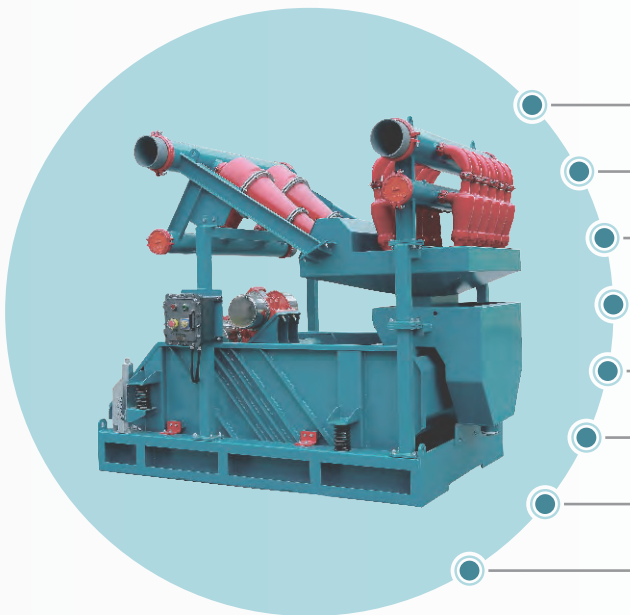
AIPU HUNTER MUD CLEANER



Application and Efficacy

- ◆ Achieve effective 2nd and 3rd phase solids control equipment. Widely used in oil and gas drilling mud process, waste management and other liquid-solid separation application.
- ◆ Great performance provide good condition for further centrifuge process. Decrease much cost on process or waste.

Features and Benefits



Flexible treating capacity options

Large screen area

High G-force

Flexible angle adjustment

Quick-replace shaker screen

Less spare parts

Application of wear and corrosion resistant coatings
and stainless steel fasteners

High cost-efficiency

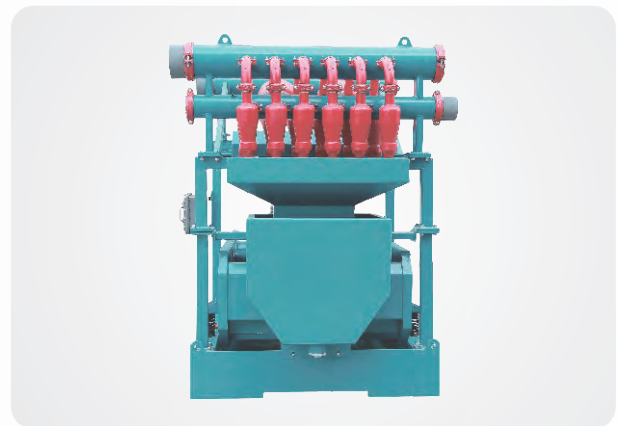
Technical Parameters

Model	Hunter120	Hunter120B	Hunter240	Hunter240B	Hunter320	Hunter320B	Hunter M120
Capacity	120m ³ /h		240m ³ /h		320m ³ /h		120m ³ /h
Desilter Cone	4"×8		4"×12		4"×16		4"×8
Desander Cone	10"×1		10"×2		10"×3		10"×1
Bottom Shaker	Hunter-D3	Hunter-MG3	Hunter-D3	Hunter-MG4	Hunter-D4	Hunter-MG4	Hunter mini
Deck Angle	-1°~+5°						None
Working Pressure	0.25~0.45MPa						
Separation Point	15~74μm						
Vibration Mode	Optional						
Motor Speed	1500rpm / 1800rpm						
Remark	4" Cone treating capacity is around 12-15m ³ /h 8" Cone treating capacity is about 30-35m ³ /h 10" Cones is around 90-120m ³ /h Whole capacity of mud cleaner can be adjusted per actual demand						

More Options

Facing the international market, based on the actual needs of users, AIPU provides flexible configuration for customers. The following are the main optional parameters.

- Electrical system is customizable
- Motor brand-Ital-Vibras/Martin/Oli
- ATEX, IECEX, etc. are optional
- Surface coating colors



AIPU APCS DESANDER

Application and Efficacy

- ◆ Achieve effective the 2nd phase solids control. Desander mainly removes solids particles between 44 and 74 μ m.
- ◆ It is the efficient equipment in the solids control system, waste management process.
- ◆ It effectively removes smaller solids particles to ensure the performance of the drilling mud and reduce drilling accidents.



Features and Benefits

- High quality polyurethane cone with cast iron injected in
- The connection method is clamp type, easy to install and disassemble
- Optional bottom shaker
- Less spare parts, easy operation and easy maintain
- Strict sand-blasting procedures
- Abrasion and corrosion resistant coatings
- ATEX, IECEX, etc. are optional

Technical Parameters

Model	APCS60	APCS120	APCS240	APCS360
Max.Capacity	60m ³ /h	90~120m ³ /h	200~240m ³ /h	320~360m ³ /h
Cones Numbers	DN200x2(8"x2)	DN250x1(10"x1)	DN250x2(10"x2)	DN250x3(10"x3)
Working Pressure	0.25~0.45MPa			
Separation Point	44~74µm			
Bottom Shaker	Bottom shaker optional, screening area 0.75 m ² , excitation motor power: 0.4 kW × 1			



More Options

Facing the international market, based on the actual needs of users, AIPU provides flexible configuration for customers. The following are the main optional parameters.

- Electrical system is customizable
- Bottom shaker available
- ATEX, IECEX, etc. are optional
- Surface coating colors

Technical Parameters

Model	Hunter S120	Hunter S240	Hunter S360	Hunter Ms120
Capacity	120m ³ /h	240m ³ /h	360m ³ /h	120m ³ /h
Power	2×1.5kW	2×1.5kW	2×1.72kW	2×0.75kW
Cones Number	DN250x1 (10"x1)	DN250x2 (10"x2)	DN250x3 (10"x3)	DN250x1 (10"x1)
Screen Size	1165x585x40 (120mesh) x3	1165x585x40 (120mesh) x3	1165x585x40 (120mesh) x4	750x900x27 (100mesh) x2
Screen Area	2m ²	2m ²	2.7m ²	1.35m ²

AIPU APCN DESILTER

Application and Efficacy

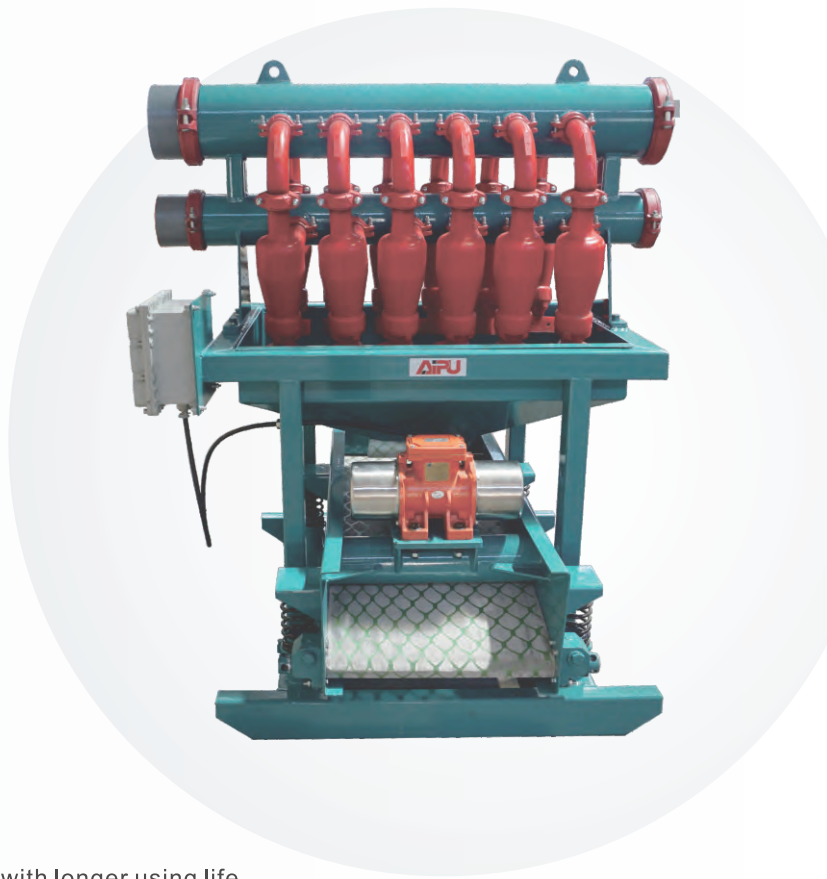
- ◆ Achieve effective the 3rd phase solids control. Mainly remove 15~44μm solid particles, is the main equipment in the solid control system.
- ◆ Effectively remove small solid particles.
- ◆ Ensure the performance of drilling mud
- ◆ Reduce drilling accidents.

Features and Benefits

- 100% Polyurethane(PU)Material for desilter cones with longer using life
- Clamp type cones for easy installation and maintenance
- Optional bottom shaker
- Easy operation with less maintenance, less spare parts
- Strict sand-blasting procedures
- Utilized anti-abrasion&anti-corrosion paint

Technical Parameters

Model	APCN60	APCN120	APCN240	APCN360
Capacity	60m ³ /h	90~120m ³ /h	200~240m ³ /h	320~360m ³ /h
Desilter Numbers	DN100x4(4"x4)	DN100x8(4"x8)	DN100x12(4"x12)	DN100x16(4"x16)
Working Pressure	0.25~0.45MPa			
Separation Point	15~44μm			
Bottom Shaker	Bottom shaker optional, screening area 0.75 m ² , excitation motor power: 0.4 kW × 1			
Weight	450kg	540kg	590kg	640kg
Overall Dim.	1450x1640x1840mm	1450x1640x1840mm		1450x2380x1840mm



More Options

Facing the international market, based on the actual needs of users, AIPU provides flexible configuration for customers. The following are the main optional parameters.

- Electrical system is customizable
- Different size of downstream shale shaker for option
- ATEX, IECEX, etc. are optional
- Surface color

Technical Parameters

Model	Hunter N120	Hunter N240	Hunter N360	Hunter MN120
Capacity	120m ³ /h	240m ³ /h	360m ³ /h	120m ³ /h
Motor	2×1.5kW	2×1.5kW	2×1.72kW	2×0.75kW
Cones Numbers	DN100X8 (4"X8)	DN100X12 (4"X12)	DN100X16 (4"X16)	DN100X8 (4"X8)
Screen Size	1165x585x40 (120mesh) x3	1165x585x40 (120mesh) x3	1165x585x40 (120mesh) x4	750x900x27 (100mesh) x2
Screen Area	2m ²	2m ²	2.7m ²	1.35m ²



AIPU APLW

MUD DECANter CENTRIFUGE

Features and Benefits



Application and Efficacy

- ◆ Drilling fluid centrifuges are usually horizontal spiral decanter centrifuges, which are mainly used to separate solid particles of 2-7 microns in drilling fluid, and can also be used to recover useful substances such as barite. The decanter centrifuge is the last stage processing equipment in solid control system.
- ◆ The role of the centrifuge in the non-weighted mud system is very significant, as it separates solid phases larger than 2 μ m, effectively solving the problem of ultra-fine harmful solid phases that cannot be separated by sand and mud removal cyclones. The centrifuge can quickly restore the specific gravity of drilling fluid and other properties, providing a reliable safety guarantee for efficient and scientific drilling. In weighted drilling fluids, centrifuges are mainly used to control viscosity and separate out ultra-fine particles solid phase and colloid.

Technical Parameters

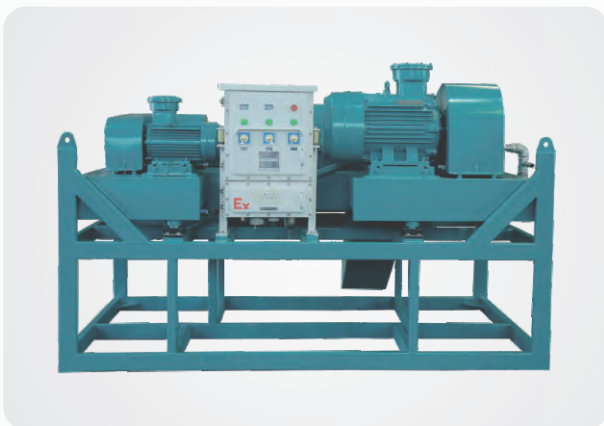
Model	APLW355X1257-N	APLW355X1460-N	APLW450X1000-N	APLW450X1350-N	APLW530X1540-N	APLW600X1019-N
Drum Dia.	Φ355mm	Φ355mm	Φ450mm	Φ450mm	Φ530mm	Φ600mm
Drum Length	1257mm	1422mm	1000mm	1350mm	1540mm	1019mm
Speed	3200rpm	3200rpm	2200rpm	3000rpm	2200rpm	1500rpm
Main Motor	30kW	37kW	37kW	37kW	55kW	55kW
Accessorial Motor	7.5kW	11kW	7.5kW	11kW	22kW	22kW
Max.Capacity	35m ³ /h	40m ³ /h	60m ³ /h	60m ³ /h	65m ³ /h	60m ³ /h
Separation Point	2~5μm	2~5μm	5~7μm	2~5μm	2~5μm	5~7μm
Separation Factor	2035G	2032G	1215G	2250G	1435G	755G
Feeding Pump Power	7.5kW	7.5kW	5.5kW	7.5kW	7.5kW	11kW

Remark: More options can be customized for you

More Options

Facing the international market, based on the actual needs of users, AIPU provides flexible configuration for customers. The following are the main optional parameters.

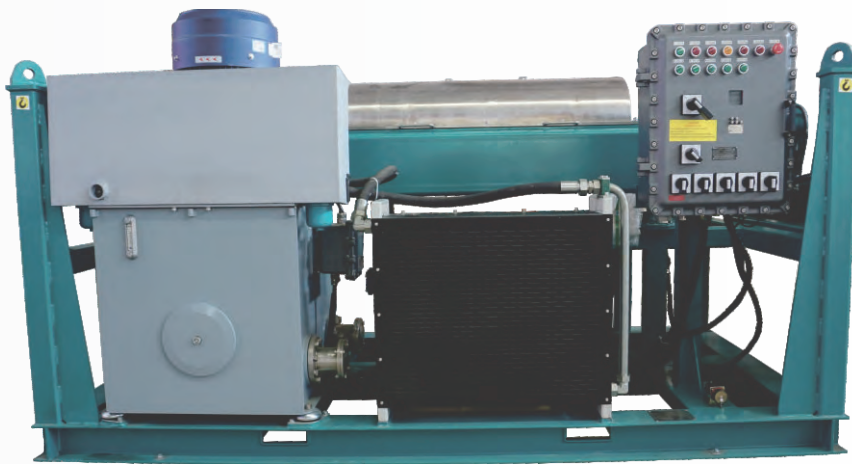
- Electrical system is customizable
- Material optional
- ATEX, IECEX, etc. are optional
- Surface color



APFHD Full Hydraulic Decanter Centrifuge

Description

- ◆ AIPU have developed a fully hydraulic drive decanter centrifuge with a well-known hydraulic drive system brand to meet the needs of domestic and foreign customers. The horizontal screw centrifuge drum and the thruster hydraulic drivesystem drive the cil pump stroke through two motors to drive the hydraulic motor and hydraulic differential. Fully hydraulically driven centrifuge makes it possible to separate the mud under the high temperature environment. The compact single-turn structure of the full hydraulic decanter makes it easier to operate and install in the field.



Technical Parameters

Model	APLW355X1257Y-N	APLW355X1460Y-N
Drum Dia.	355mm	355mm
Drum Length	1257mm	1422mm
Max. Capacity	946 l/min	1000 l/min
Max.Speed	3200rpm	3600rpm
Speed	2900rpm	3200rpm
Max.Centrifugal Force	2035G	2035G
Drive Form	hydraulic drive	hydraulic drive
Motor Power	37kW	37kW

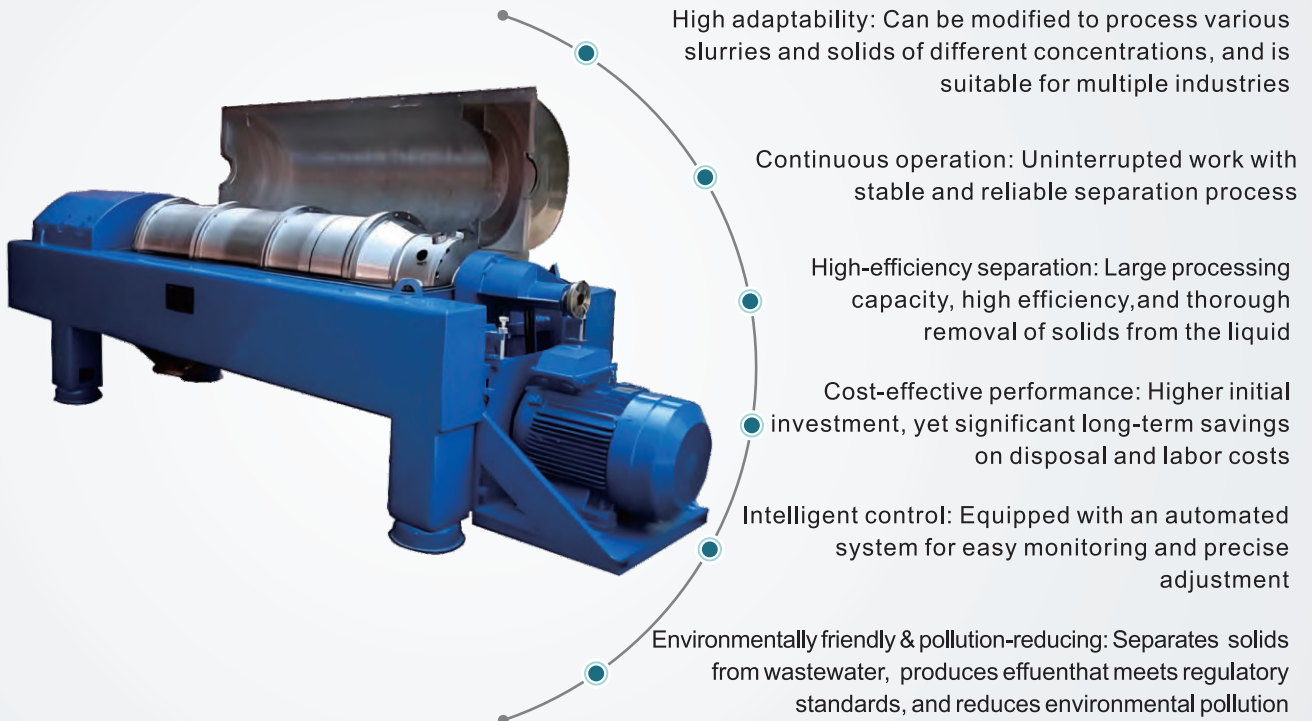
AIPU APLWS

THREE-PHASE DECANTER CENTRIFUGE

Functions

It separates two liquids of different densities while simultaneously separating and discharging solids. The material enters the centrifugal chamber through the feed pipe and distributor to complete the separation process.

Features and Benefits



Type and Application

Horizontal Decanter Centrifuge

- Advantages: High separation efficiency (capable of removing fine solids), large processing capacity, ideal for high-throughput scenarios
- Applications: Municipal and industrial wastewater treatment, used for sludge solid-liquid separation and wastewater purification

Typical Application

- Drilling mud solids control
- Municipal wastewater treatment
- Industrial wastewater treatment
- Oil-bearing wastewater treatment
- Sludge dewatering

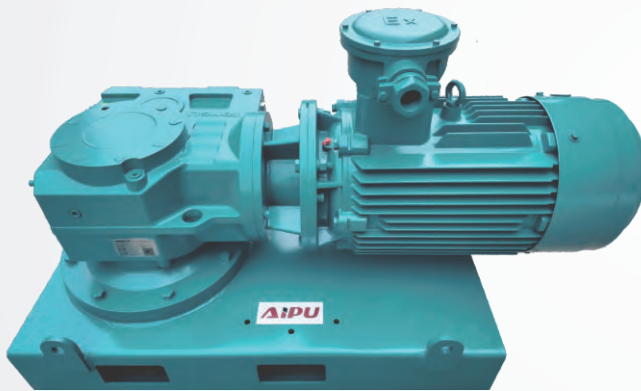
Technical Parameters

Model	APLWS355X1460BP-N	APLWS420X1680BP-N	APLWS520X2080BP-N	APLWS565X2600BP-N
Drum Dia.	355mm /14in	420mm/17in	520mm/20in	650mm/26in
Drum Length	1460mm/57in	1680mm/66in	2080mm/82in	2660mm/102in
Designed Speed	3500rpm	3400rpm	3000rpm	2500rpm
Operating Speed	2800rpm	2700rpm	2300rpm	1800rpm
Separation Factor	2435	2700	2620	2275
Separation Point	5µm	10µm	15µm	25µm
Main Motor	15kW	30kW	45-55kW	75-79kW
Auxiliary Motor	7.5kW	7.5kW	11-22kW	30kW
Overall Dim.	3430x520x1220mm 135 x 36 x 48in	3930 x1650 x1100mm 155 x 65 x 43in	4650 x1475 x 1170mm 181 x 58 x 46in	5050x1800x1450mm 199 x 71 x 57in
Weight	2400Kg	3550Kg	5345Kg	8900 Kg

AIPU APMA

DRILING MUD AGITATOR

Features and Benefits



Available in two connection types: direct drive and coupling drive

Featuring bearings from renowned brands such as FAG and SKF, and SOG seals

Space-saving, high transmission efficiency, low maintenance cost and stable operation

Mud agitator is used in the surface mud tank to suspend solids and maintain a homogeneous mixture throughout the mud solids control system. It is mainly used for stirring and mixing drilling fluid to prevent solid phase particles from depositing in its tank circulation system, so that the performance of circulating drilling fluid is stable and evenly mixed.

Mud agitators are installed on the tank surface, usually requiring one every 3 meters, or one per compartment. In addition to common models, we can also provide customized services according to user demands, Such as APMA005, APMA220.

Application and Efficacy

- ◆ Mud agitator is used for mixing drilling fluid to prevent solid particles of drilling fluid from depositing in its tank circulation system, so that the circulating drilling fluid performance is stable and the mixing is uniform.
- ◆ High mixing intensity, wide wave range, and reduced starting resistance torque.

Technical Parameters

Model	APMA055A	APMA075A	APMA110A	APMA150A
Motor	5.5kW	7.5kW	11kW	15kW
Impeller Speed	60/72rpm	60/72rpm	60/72rpm	60/72rpm
Single Impeller	850mm	950mm	1050mm	1200mm
Dual Impeller	N/A	Upper:800mm	Upper:850mm	Upper:950mm
		Down:800mm	Down:850mm	Down:950mm
Ratio	25:1	25:1	25:1	25:1
Dimension	1008x410x590mm	1033x440x640mm	1219x440x690mm	1324x495x750mm
Weight	280kg	320kg	430kg	550kg
Shaft Length	Depends on tank depth			
Power System	380V/50HZ, 460V/60HZ (Customizable)			
Remark	Shaft stabilizer is available			

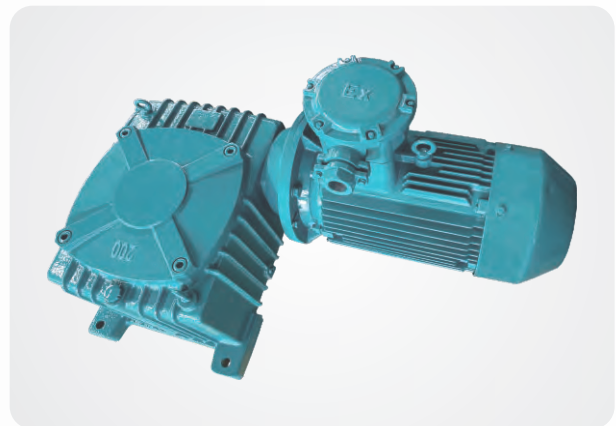
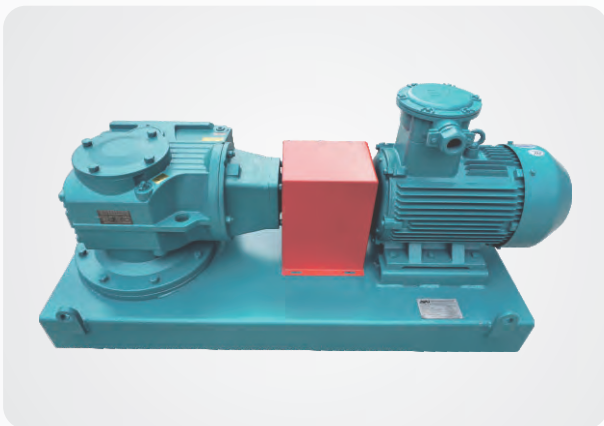
More Options

Facing the international market, based on the actual needs of users, AIPU provides flexible configuration for customers. The following are the main optional parameters.

- Electrical system is customizable
- The materials for the shaft and the impellers are optional
- ATEX, IECEX, etc. are optional
- Surface color

Other types of mud agitators

- ◆ There are two types of agitators, worm gear and bevel gear. Which are divided into horizontal and vertical according to the installation method. The installation area of vertical agitator is also about the surface of the tank, which is suitable for special installation environment.



AIPU APVTP

VACUUM TRANSFER PUMP

Features and Benefits

The equipment operates with 100% pneumatic power, requires no electricity high security

Wide range of application, enabling automatic suction and discharge of the materials

It can convey solid materials with a maximum particle size of 50mm or 75mm and is capable of handling mixed liquids with a solid content of up to 80%

Good overall strength, is convenient for hoisting, has a compact structure and is easy to move

It can work automatically continuously and is easy and convenient to operate and maintain



Application and Efficacy

The vacuum transfer pump is a high-load, strong-suction vacuum conveying pump, also known as sludge transfer pump. Its unique structural design enables it to operate under the most challenging conditions with low maintenance requirements, and it can efficiently convey materials up to 80% solid content as well as high gravity materials.

The high-efficiency venturi device can generate a vacuum as high as 8 meters of water column (25" Hg) under strong airflow conditions to suction materials, with almost no wearing parts. The pump body features a compact structure, making it suitable for conveying high-density materials. It is commonly used for transporting drilling cuttings and oil-containing sludge.

Technical Parameters

Model	APVTP-40	APVTP-20	APVTP-10
Max. Capacity	40m ³ /h	20m ³ /h	10m ³ /h
Inlet And Outlet Diameter	4"(114mm)	4"(114mm)	3"(89mm)
Vacuum Level	85Kpa/25inch HG(Mercury Column)		
Max. Suction Distance	50m		
Max. Discharge Distance	1000m	500m	
Max. Solids Content	80%		
Max. Particles Size	75mm	50mm	
Pressure Demand	550Kpa-785Kpa(80-114PSI)		550Kpa-690Kpa(80-100PSI)
Air Demand	17m ³ /min(600CFM)	8m ³ /min(280CFM)	4.3 m ³ /min(150CFM)
Weight	900kg	400kg	350kg
Suction Time Discharge Time	Adjustable from 0 to 30s		
Discharge Method	Alternating suction and discharge		

More Options

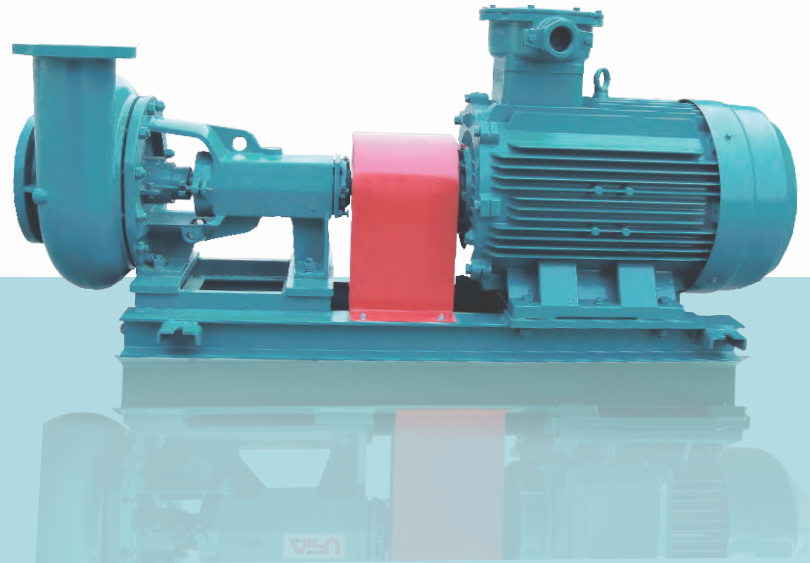
Facing the international market, based on the actual needs of users, AIPU provides flexible configuration for customers. The following are the main optional parameters.

- Surface color



AIPU APSB

CENTRIFUGAL PUMP

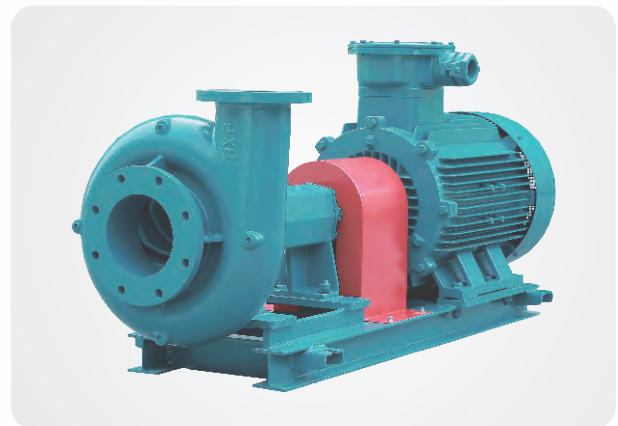
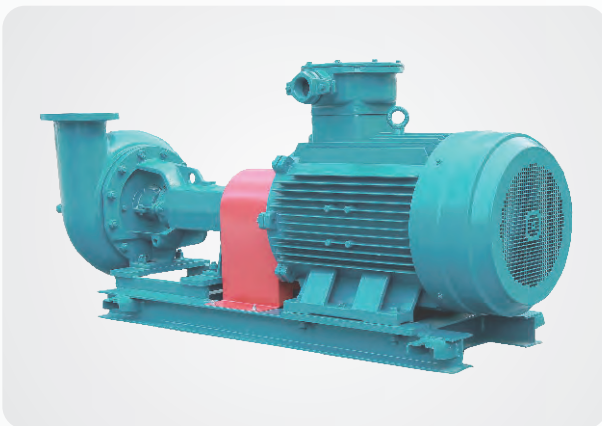


Features and Benefits

- Stable performance
- Reliable raw materials and quality
- Less spare parts
- Easy operation with less maintenance
- Strict and exquisite painting finishing process
- High quality mechanical seal, ensure core quality
- Interchangeable with MISSION Magnum series

Application and Efficacy

- ◆ Efficiently transfer mud, provide power for mud treatment equipment of solid control system.
- ◆ Provide sufficient power and mud supply for the complete mud system and corresponding equipment.



Technical Parameters

Model	Flow Rate	Head	Power	Speed	Efficiency
APSB8x6-12.5	255m ³ /h	32m	75kW	1450rpm	67%
APSB8x6-11.5	250m ³ /h	24m	55kW	1450rpm	63%
APSB8x6-11	245m ³ /h	20m	45kW	1450rpm	62%
APSB6x5-12	195m ³ /h	31m	45kW	1450rpm	68%
APSB6x5-11	190m ³ /h	24m	37kW	1450rpm	70%
APSB5x4-12	110m ³ /h	32m	30kW	1450rpm	65%
APSB5x4-11	105m ³ /h	27m	22kW	1450rpm	68%
APSB4x3-10	80m ³ /h	21m	15kW	1450rpm	66%
APSB4x3-9	70m ³ /h	16m	11kW	1450rpm	66%
APSB3x2-10	45m ³ /h	21m	7.5kW	1450rpm	60%


Remark: Specifications at 50HZ

Model	Flow Rate	Head	Power	Speed	Efficiency
APSB8x6-11	250m ³ /h	35m	75kW	1750rpm	67%
APSB6x5-11.5	200m ³ /h	42m	75kW	1750rpm	70%
APSB6x5-11	190m ³ /h	37m	55kW	1750rpm	68%
APSB6x5-10	180m ³ /h	28m	45kW	1750rpm	70%
APSB5x4-11	105m ³ /h	38m	37kW	1750rpm	62%
APSB5x4-10.5	105m ³ /h	34m	30kW	1750rpm	62%
APSB5x4-9.5	100m ³ /h	25m	22kW	1750rpm	62%
APSB4x3-10	80m ³ /h	32m	22kW	1750rpm	64%
APSB4x3-8.5	70m ³ /h	21m	15kW	1750rpm	64%
APSB3x2-9.5	45m ³ /h	27m	11kW	1750rpm	58%
APSB3x2-8.5	40m ³ /h	23m	7.5kW	1750rpm	58%

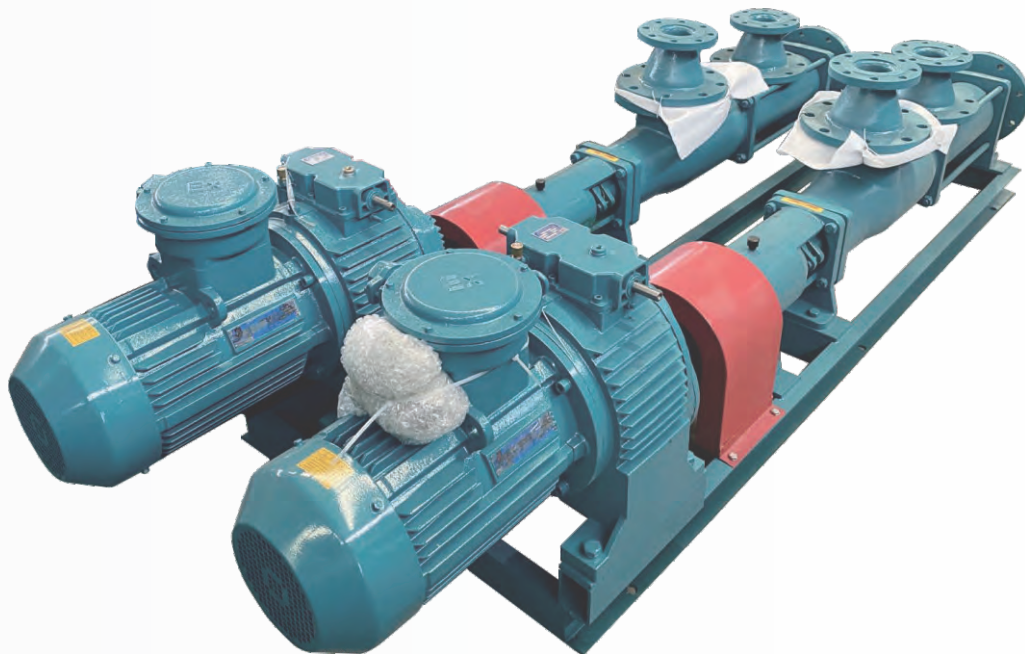
Remark: Specifications at 60HZ

More Options

Facing the international market, based on the actual needs of users, AIPU provides flexible configuration for customers. The following are the main optional parameters.

- Vertical or horizontal
- Electrical system is customizable
- Surface color 

AIPU APG SCREW PUMP



Application and Efficacy

- ◆ Because the flow rate and working pressure are stable, the single screw pump is often used as a centrifuge feeding pump in the solid control system. Through the unique geometric shape of the screw shaft(rotor) and the screw sleeve (stator), the extrusion volume can be generated respectively, so that the mud flows with the shaft.

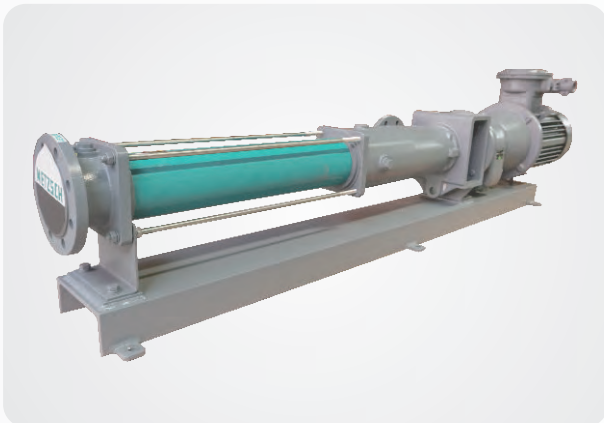
Features and Benefits

- Gas media can be transported even under negative pressure
- Liquid phase with fibers and solid particles can be transported
- The pump screw is made of stainless steel
- Less spare parts, compatible structure, compact design, easy maintenance
- Easy to replace wearing parts

Technical Parameters

Model	RPM	Power	Inlet	Outlet
APG05-022B	329rpm	2.2kW	DN50/2"	DN50/2"
APG10-040B	243rpm	4kW	DN80/3"	DN80/3"
APG20-055B	243rpm	5.5kW	DN80/3"	DN80/3"
APG30-075B	243rpm	7.5kW	DN100/4"	DN100/4"
APG70-110B	270rpm	11kW	DN125/5"	DN125/5"
APG90-185B	229rpm	18.5kW	DN150/6"	DN150/6"

Remark: Please contact us for more options



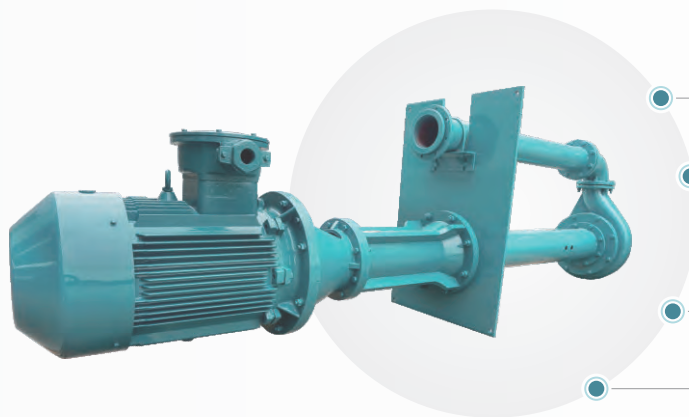
AIPU APYZ

SUBMERSIBLE SLURRY PUMP

Description

- ◆ The APYZ submersible slurry pump is a single-stage, single suction cantilever structure, the main feature is in the liquid part of the pump shaft, there is enough stiffness, impeller, no bearings between the pump shell, no shaft seal, can be transported with a large concentration of fixed particles medium.

Features and Benefits



The pump shaft in the liquid part has sufficient stiffness

The impeller is a semi-open impeller

No bearing and gland seal for less repair cost, media with larger concentrations of fixed particles can be transported

ATEX, IECEX, etc. are optional

Technical Parameters

Model	Flow Rate	Head	Speed	Power	Outlet
AP50YZ20-18	30m ³ /h	10m	1450/1750rpm	4kW	DN50/2"
AP50YZ30-20	30m ³ /h	20m	1450/1750rpm	5.5kW	DN50/2"
AP50YZ40-10	40m ³ /h	10m	1450/1750rpm	5.5kW	DN50/2"
AP50YZ20-20	50m ³ /h	20m	1450/1750rpm	7.5kW	DN50/2"
AP80YZ50-20	60m ³ /h	18m	1450/1750rpm	7.5kW	DN50/2"
AP80YZ80-20	80m ³ /h	21m	1450/1750rpm	11kW	DN80/3"
AP100YZ100-30A	110m ³ /h	24m	1450/1750rpm	18.5kW	DN100/4"
AP100YZ100-30	120m ³ /h	28m	1450/1750rpm	22kW	DN100/4"
AP100YZ160-38B	164m ³ /h	26m	1450/1750rpm	30kW	DN100/4"
AP150YZ250-40B	240m ³ /h	24m	1450/1750rpm	37kW	DN150/6"
AP150YZ250-40A	270m ³ /h	30m	1450/1750rpm	45kW	DN150/6"

AIPU APJQB

SHEAR PUMP



Application and Efficacy

- ◆ The polymer used in drilling mud has a high molecular weight and is difficult to hydrate when directly added. If not fully sheared, the polymer may block the screen of shale shaker in the first cycle, causing a large amount of polymer loss, increasing drilling costs, and may also make the large-sized solid particles in the drilling fluid hard and difficult to remove. In drilling fluid, due to insufficient shear, polymers can produce many “fish eyes” that can damage the formation, reduce formation permeability, and reduce oil and gas production. Therefore, it is necessary to pre shear the polymer and then enter the drilling fluid system to improve the performance of the drilling fluid in order to fully exert its function. The shear pump can provide high shear efficiency, accelerate the dilution and hydration process of polymers.

Adopting comprehensive mechanical sealing technology and innovative and unique design, it is the first domestically and internationally to have advanced sealing performance, reliable operation, and long service life

Greatly improve the hydration degree of soil particles and save over 30% of bentonite

Provide high shear force for the rapid hydration of polymer (or clay), and solve the prominent problems caused by poor hydration of polymer (or clay) in drilling fluid

Reduce the loss of mud cake and fluid flow, and lower the shear ratio rate of drilling fluid, and improve the strength of gel, thus reaching the advanced level that same as foreign products

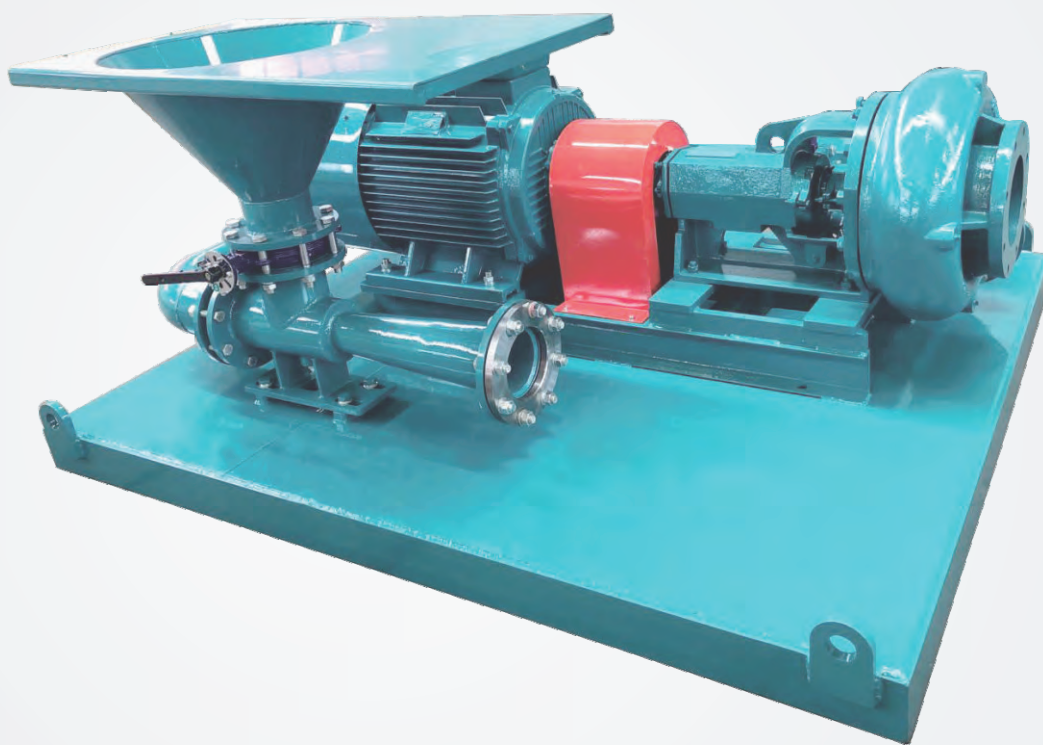


Technical Parameters

Model	Flow Rate	Head	Power	Speed	Weight	Dimension
APJQB6535	100m ³ /h	24m	37kW	1900rpm	800kg	1150x1100x1250mm
APJQB6545	155m ³ /h	35m	55kW	2200rpm	980kg	1150x1100x1500mm

AIPU APSLH

JET MUD MIXER



Description

- ◆ APSLH series mud mixing unit is a type of equipment used in conjunction with the oil drilling solid control system. It is suitable for the weighting and preparation of drilling fluid in various drilling environments and solid control systems.

Features and Benefits

Compact structure, effective use

Motor and control panel are famous brand

Pump body seal is reliable mechanical seal, improve service life

Venturi-design hopper, fast mixing speed, and no slurry return



Technical Parameters

Model	Centrifugal Pump	Power	Flow Rate	Head	Nozzle Diameter
APSLH110-20	APSB3x2	11kW	50m ³ /h	25m	20mm
APSLH150-20	APSB4x3	15kW	80m ³ /h	21m	20mm
APSLH185-25	APSB5x4	18.5kW	100m ³ /h	21m	25mm
APSLH220-25	APSB5x4	22kW	105m ³ /h	27m	25mm
APSLH300-35	APSB5x4	30kW	110m ³ /h	32m	35mm
APSLH370-35	APSB6x5	37kW	190m ³ /h	24m	35mm
APSLH450-40	APSB6x5	45kW	195m ³ /h	31m	40mm
APSLH550-50	APSB8x6	55kW	250m ³ /h	24m	50mm
APSLH750-50	APSB8x6	75kW	255m ³ /h	32m	50mm

More Options

Facing the international market, based on the actual needs of users, AIPU provides flexible configuration for customers. The following are the main optional parameters.

- Electrical system is customizable
- The material can be common carbon steel or hydrogen sulfide resistant steel
- ATEX, IECEX, etc. are optional
- Surface color

AIPU APSLH

PORTABLE HOPPER

Description

- ◆ Portable or moveable hopper is developed from Venturihopper. It mainly consists of hopper body, butterfly valve, Venturi part and frame.
- ◆ It's very easy to handle and operate, high-efficient and reliable. Used together with pump, pipelines, suction and discharge lines.



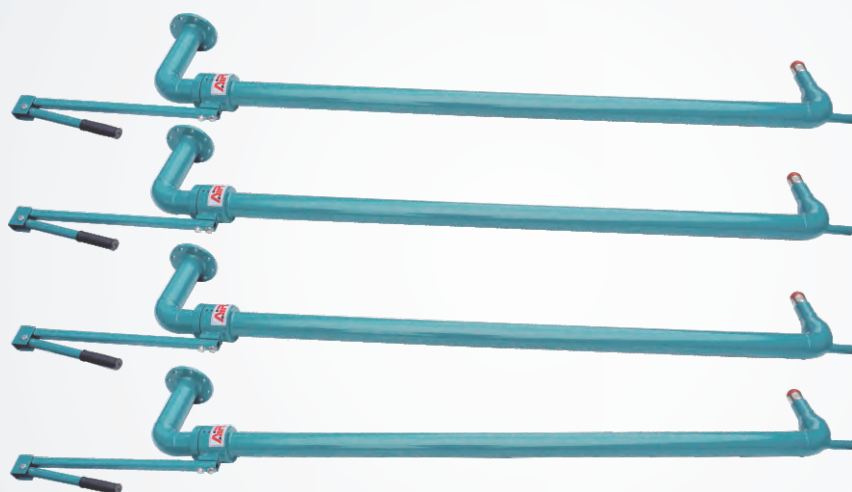
Technical Parameters

Inlet Pressure	0.22 ~ 0.4MPa
Pipe Dia.	6 "(DN150)
Flow Rate	150~200m ³ /h
Treating Capacity	Clay:180kg/min
	Barite:315kg/min
Overall Dimension	1545*752*1165mm



AIPU APNJQ

MUD GUN



Application and Efficacy

- ◆ The mud gun is mainly used to prevent the mud from being deposited in the mud tank.
- ◆ It is also used as auxiliary equipment of agitator to stir mud and clean tank bottom.
- ◆ There are low pressure, medium pressure and high pressure for option.

Features and Benefits

Great jetting effect and large cleaning area

Easy installation and convenient operation

Fixed nozzle or rotary nozzle for option

Mud gun length can be customized



Mud gun nozzle



Mud gun rotating device

Technical Parameters

Model	Pressure	Nozzle	Rotation	Bore size
APNJQ50G	1.0~6.4MPa	2	Fixed	DN50/2"
APNJQ50X		2	360°	DN50/2"
APNJQ80G		3	Fixed	DN80/3"
APNJQ80X		3	360°	DN80/3"

AIPU APMGS

MUD GAS SEPARATOR



Application and Efficacy

- ◆ The APMGS series atmospheric pressure mud gas separator is a specialized equipment for primary degassing of gas-invading drilling fluid, mainly used to remove large bubbles with a diameter of approximately 30mm. These large bubbles refer to the expansive gas that mostly fills a certain section of the wellbore annulus in the drilling fluid. If not removed, it can easily cause a kick or even spray out of the surface of the drilling disc.
- ◆ The APMGS series atmospheric pressure anti hydrogen sulfide mud gas separator is made of high-quality materials, which can effectively prevent the erosion of harmful gases and ensure the safety of human-machine production.

Features and Benefits

- Common carbon steel or H₂S resistant steel for option.
- Heavy-duty marine anti-corrosion painting with 3 layers.
- Unique design ensures constant liquid level in the separator and solves the problem of sand accumulation inside the tank.
- The combination of multiple separation technologies such as centrifugal separation, physical impact separation, and vacuum separation ensures the separation effect of gases.
- Buffer devices are installed at the corners of the liquid supply pipe and replaceable impact resistant baffles are added. Regular inspection and replacement can be carried out according to wear conditions to extend the service life.
- The sulfur resistant mud gas separator is manufactured and processed entirely with special materials, which can completely prevent damage to the equipment caused by hydrogen sulfide in the gas.



More Options

Facing the international market, based on the actual needs of users, AIPU provides flexible configuration for customers. The following are the main optional parameters.

- Pressure requirement is customizable
- Common carbon steel or H₂S resistant steel for option
- Pressure vessel, inspection certification etc
- Surface color

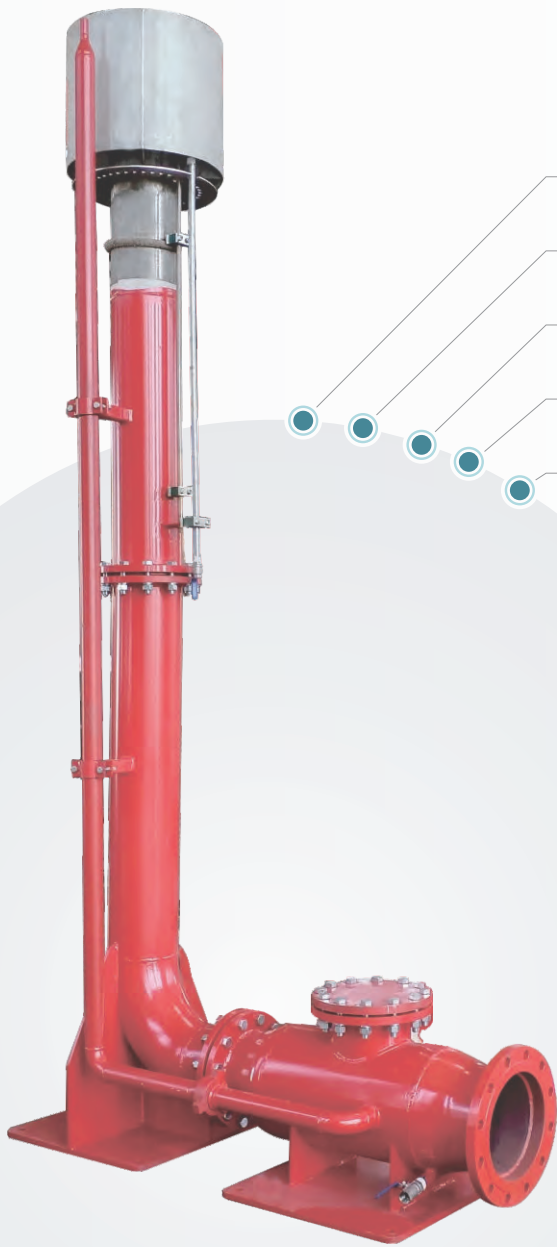
Technical Parameters

Model	Vessel Dia.	Flow Rate	Inlet Dia.	Discharge Line Dia.	Vent Line
APMGS800	DN800/32"	200-260m ³ /h	DN125/5"	DN200/8"	DN200/8"
APMGS1000	DN1000/40"	240~300m ³ /h	DN125/5"	DN200/8"	DN200/8"
APMGS1200	DN1200/48"	280-360m ³ /h	DN125/5"	DN250/10"	DN200/8"
APMGS1400	DN1400/52"	320-420m ³ /h	DN125/5"	DN300/12"	DN200/8"

AIPU APFI

FLARE IGNITOR DEVICE

Features and Benefits



Spraying marine heavy anti-corrosion paints

S.S torch

Remote control optional

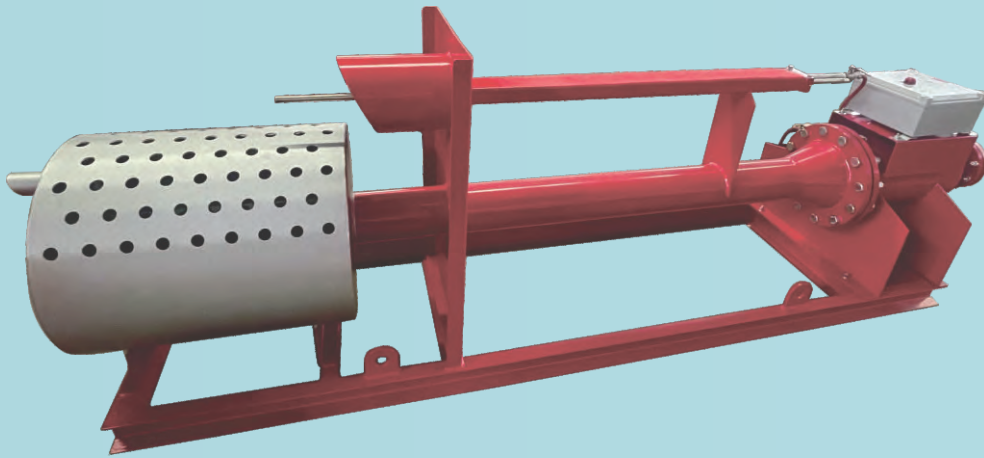
Remote and manual ignition box, double fuse ignition

Can be installed vertically or horizontally

Ignition fuel with diesel and natural gas for options

Special fire arrestor design to avoid back fire

Longer service time



Application and Efficacy

- ◆ The APFI series electronic flare ignitor device designed and manufactured by AIPU can ignite and incinerate vented flammable and harmful gases to eliminate their harm to the environment and safety. It is a safe and environmentally friendly equipment. This device along with the mud gas separator is now widely used in petroleum drilling industry.
- ◆ The main components are imported, while other components and cables are made of high-quality domestic products. Their working performance is stable after many years of use.

Technical Parameters

Model	APVFIL8	APVFIO8	APHFIL4	APHFIO6
Type	Vertical		Horizontal	
Combustion Source	Natural Gas	Diesel	Natural Gas	Diesel
Torch Dia.	DN200/8"	DN200/8"	DN150/6"	DN150/6"
Ignition Dia.	DN500/20"	DN500/20"	DN600/24"	DN600/24"
Control Mode	Remote control and wired control			
Burn Height	2500-3000mm			
Ignition Voltage	16kV			
Ignition Frequency	100-1000times/min			
Charging Voltage	220V/50HZ			

SOLIDS CONTROL SYSTEM



- Experienced professional on design and manufacture ensure clients optimal proposal
- Complete line of equipment and high-quality supplier provide stability and reliability
- Circumspect service through whole sales procedure. Support clients thoroughly
- True cost-effective solution. Create the maximum value for users by enhancing their efficiency and competitiveness



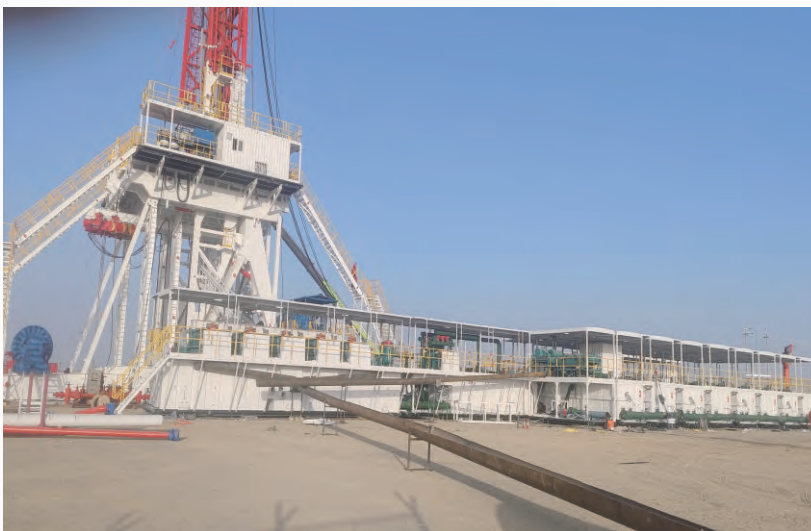
Why AIPU?

The solids control system made by Aipu is easy to operate. Based on clients' requirements we provide the optimal solutions to process drilling fluids efficiently. For example, the corrugated profiles provide both strength and exquisite appearance. It suits various of drilling mud, such as OBM, WBM, SBM under different working condition.

We care what clients care, so the standard tank bottom is sloped or V shaped for easy cleaning and less dead corner. From the very beginning of proposal, we give professional solution based on thorough understanding users' demand and our expertise accumulated over 15 years.

Trace the entire production process and control the quality from the details. Selecting components from qualified suppliers strictly and making products at high degree of standardization to decrease operation and maintenance cost.

We only guarantee what we are able to do, and we do what we've promised.



Mud Tank



Trailer mounted fracturing liquid tank



Transfer tank



Elevated fuel tank



Double-layer square oil tank



Trailer mounted tank

Mud Tank



Mud mixing tank



Fracturing liquid tank



Double-layer fuel tank



Cement silo



Cutting box/Mud skip

AIPU APVCD CUTTINGS DRYER



Application and Efficacy

- ◆ The cuttings dryer is also known as a centrifugal dryer. It is widely used in drilling cuttings treatment and oil-based mud tail slurry treatment. It can greatly increase material handling efficiency, improve drying efficiency, and save material transportation costs in the later stage.
- ◆ The efficient drying of drilling cuttings help users to save cost on subsequent processing and transportation while reducing the impact on the environment.

Compact design

Efficient operation

Stable and reliable performance

Easy to use and maintain

Top brand products in the power part

Customization is available


Technical Parameters

Model	Power	Capacity	Speed
APVCD930	55kW+0.55kW	≤40m ³ /h	900rpm
APVCD930-VFD	55kW+0.55kW	≤40m ³ /h	0~1200rpm

Note: For more specifications or requirements, please do not hesitate to contact us.

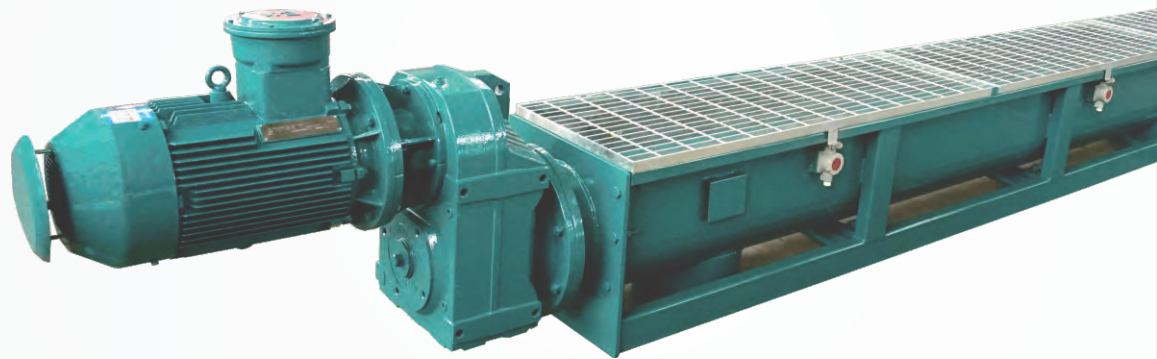
More Options

Facing the international market and based on the actual needs of users, AIPU provides flexible configurations for customers. The following are the main optional parameters.

- Electrical system is customizable
- The related equipment it is containerized design or not
- Surface color 

AIPU APLS

AUGER FEEDER




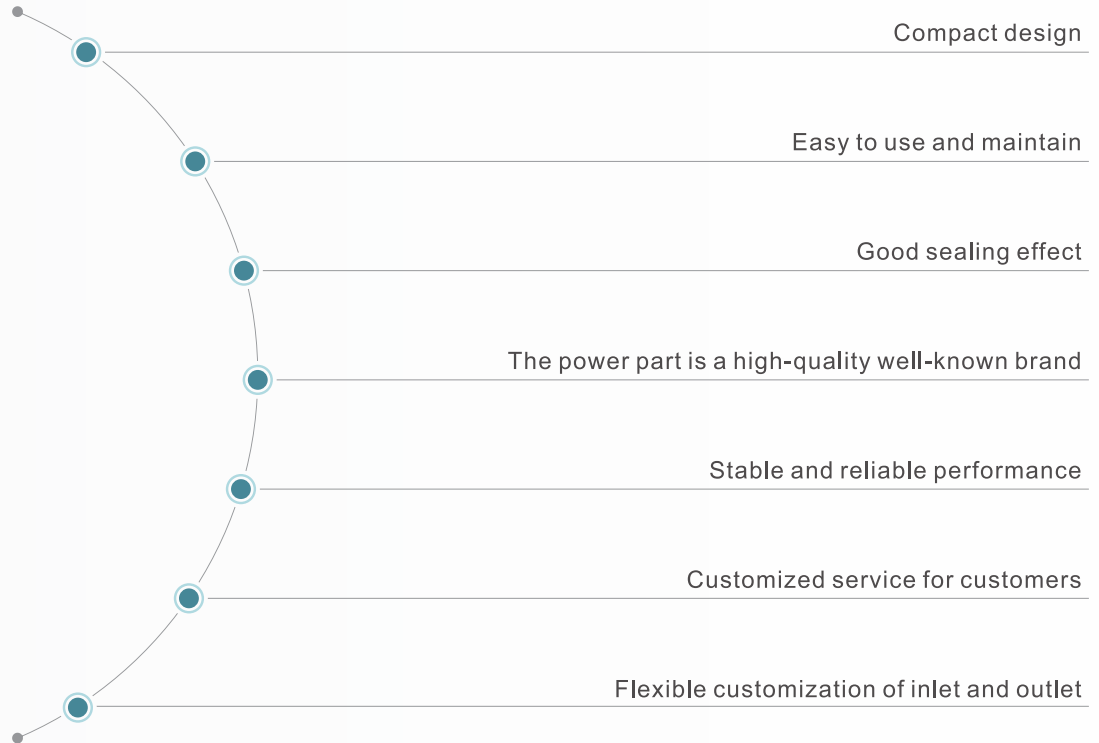
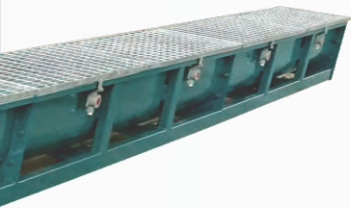
Application and Efficacy

- ◆ An auger feeder, also known as a screw conveyor, is widely used in drilling cuttings treatment and tail slurry treatment. This includes transporting materials to the cuttings dryer or transporting waste to designated cuttings boxes. Power, length, diameter, slope, speed, and conveying capacity can be customized according to actual working conditions.
- ◆ Efficient cuttings transportation will help users achieve better processing results. The auger feeder can provide a continuous and stable conveying effect for a large amount of materials, effectively ensuring the normal use of subsequent processing equipment.

More Options

Facing the international market and based on the actual needs of users, AIPU provides flexible configuration for customers. The following are the main optional parameters.

- Electrical system is customizable
- Surface color 



Technical Parameters

Model	Power	Diameter	Length	Horizontal Capacity
APLS10-40	5.5kW	250mm	12m	15m ³ /h
APLS12-30	5.5kW	300mm	9m	20m ³ /h
APLS14-30	7.5kW	350mm	9m	30m ³ /h
APLS14-40	11kW	350mm	12m	30m ³ /h
APLS16-30	15kW	400mm	9m	45m ³ /h
APLS18-30	15kW	450mm	9m	55m ³ /h

Note: For more specifications or requirements, please do not hesitate to contact us.

MUD COOLING SYSTEM



Mud cooling system is also referred to as mud cooler for cooling down drilling fluid temperature. Mud cooling system helps to make rotation guidance work efficiently and safely, thereby leading drilling work efficiently and safely.



OILY SLUDGE TREATMENT SYSTEM



This oil sludge volume reduction system is designed for the efficient treatment of oily sludge. Leveraging the synergistic effects of physical, chemical, and biological processes, it achieves significant volume reduction and deep oil removal while thoroughly eliminating harmful contaminants. The system enhances overall treatment efficiency and outcomes, reduces environmental impact, and promotes resource recycling. It serves as essential equipment for enabling cleaner production and sustainable development.



OIL BASE MUD WASTE MANAGEMENT

For oil-based mud cuttings management, the core objectives are the harmless treatment of waste and the efficient recycling of base oil. The key performance metrics are the oil content in the solid phase ($\leq 5\%$) and the oil recovery rate.

Application

Deep well drilling typically uses oil-based mud (OBM). After processing by the solids control system, the oil content in the solid phase can be as high as 12–18%. Treating this OBM waste with a cuttings management system effectively reduces the environmental impact of harmful contaminants.

Main Structure and Process

Process: Cuttings are processed by the vertical dryer first, then further separated by the decanter centrifuge. The liquid phase is reused, and the solid waste (oil content $\leq 5\%$) is transferred into mud skips.

Performance: The treating capacity is 40–60 t/h, with real-time monitoring of temperature and torque. Its operation is straightforward and safe.

Environmental and Economic Value

"No pooling," "reduction," "zero emission," and "zero addition" are all achieved on site. It not only reduces operational costs but also prevents further environmental pollution. Therefore, this drilling cuttings management system is widely used both domestically and internationally.



WATER BASE MUD WASTE MANAGEMENT

Application

The core objectives are the harmless treatment of WBM waste and resource recycling. Critical performance parameters include the residual moisture in dehydrated solids ($\leq 15\%$) and the filtrate recovery rate.

Main Structure and Process

This system includes shale shakers, drying shakers, decanter centrifuges, filter presses, and dosing systems. Process Flow: Cuttings are first processed by shale shakers to remove large particles, then further separated by the decanter centrifuge. The recovered qualified drilling fluid is returned to the mud circulation system, while the separated cuttings/solids are dewatered by the filter press to achieve a moisture content of no more than 15%. The resulting clean water can be reused or safely discharged.

Performance: The system's treating capacity is customizable to meet user requirements. It produces mud cakes with a moisture content of only 10–15%, complying with environmental standards for transfer or disposal.

Environmental and Economic Value

The system ensures on-site achievement of "no pooling," "volume reduction," "zero emission," and "zero addition." This approach not only reduces operational costs but also prevents further environmental pollution. Consequently, this WBM drilling cuttings management solution is widely applicable in various drilling operations home and abroad, including oil & gas, coal bed methane (CBM), and shale gas, etc.



DRILLING ACCESSORY EQUIPMENT



Mud Plant

DRILLING ACCESSORY EQUIPMENT



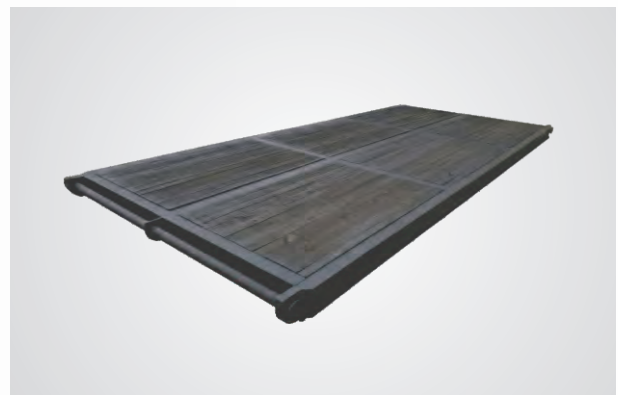
Brine Filter



Mist System



Tank Valve



Drilling Rig Mat

AIPU PARTNERS



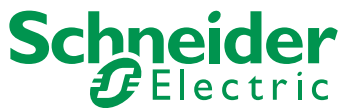
中国石油



SOLIDS CONTROL SOLUTIONS FOR YOU

API & ISO Certified

Inquiry : info@aipusolidcontrol.com



SOLIDS CONTROL SOLUTIONS FOR YOU

API & ISO Certified

Inquiry : info@aipusolidcontrol.com

SOLIDS CONTROL SOLUTIONS FOR YOU



 0086-29-63611979

Aipu Solid Control Co., Ltd

- Email : sales@aipusolidcontrol.com
- Website : www.aipusolidcontrol.com
- Factory : Fuyan Industrial Cooperation Park, Shaanxi, China
- Office : Room 801 Block A China Minmetals Financial Centre, Xi'an, Shaanxi, China

Inquiry : info@aipusolidcontrol.com